

INTRODUCTION

The Myers-Briggs Type Indicator® (MBTI®) and the Murphy Meisgeier Type Indicator for Children (MMTIC™) are two personality self-report instruments suggested for helping people gain self-awareness and self-acceptance, which will enhance their emotional growth toward awareness of themselves and others, increase appreciation of diversity and successful interaction with, and understanding of, others.

It is hoped that by enhancing the verification process that people will appreciate their “True Type” and be more accepting of others. With children and adults, it is hoped that not only will this add to their emotional development but aid in reducing behaviours such as bullying, which may sometimes result as a fear of others who are different or whom are not understood. Other benefits can include improved communication, enhanced relationships, and reduced conflict and stress.

IMPORTANT NOTES

- TypeFace™ cards, InterActive TypeFace™ and/or TypeFace™ Slideshow are not designed to be tools used to sort people into Type categories nor to replace administration of a Type sorting instrument such as the Murphy Meisgeier Type Indicator for Children (MMTIC™) or the Myers-Briggs Type Indicator® (MBTI®) by a qualified practitioner.
- TypeFace™ cards are intended for use as a tool for learning about personality type and increasing understanding of Type and acceptance of differences. They are not designed to necessarily be the only tool used to provide feedback to someone who has undertaken the MMTIC™ or MBTI®.
- It is of particular use in helping people verify (confirm) their Type results having undertaken a process such as having the MBTI® or a MMTIC™ administered to them. It should only ever be administered by a trained practitioner and is recommended for people aged 10 and above.
- While these descriptions might be compatible with the MMTIC™ and/or MBTI® there is no substitute for professional interpretation by a qualified practitioner.
- For more information on the MBTI® or MMTIC™ you can contact an organisation such as Synergetic Learning – info@synergetic.com.au. We offer basic workshops and practitioner applications training (but not qualifying programs). For current contact details please visit www.synergetic.com.au

TYPEFACE™ KIT

The TypeFace™ kit consists of:

- 1 set of 80 cards
- 1 CD containing InterActive TypeFace™ and TypeFace™ Slideshow software
- 2 participant response notebooks
- 1 User's Guide

Description of components:

- 1 set of 80 cards –
 - 80 laminated cards (approximately 100 x 115mm each) with cartoon characters depicting characteristics and/or situations relevant to Type and/or Temperament.
- 1 CD containing –
 - InterActive TypeFace™ - time-limited (1 year) single user license; 28 pairs of pictures (28 slides) comparing each of four dichotomies; interactive – the person clicks on either a button beneath or on one of the paired pictures choosing the one most like them; the program will score the result; and provide a result to use for comparison with Indicator results.
 - TypeFace™ Slideshow – ongoing single user license; 28 pairs as per InterActive TypeFace™ - non-interactive; additional 37 slides (total 100 pictures, 65 slides) depicting preference & Temperament examples & exercise prompts.
- 2 participant response notepads – these are for use with the cards and/or slideshow (providing an alternative to using the interactive program).
- User's Guide – information about the kit, using the TypeFace™ software and some information about individual pictures. As some pictures are repeated in the different components the numbering relates to the pictures within the slideshow as it contains the most number of pictures.

TECHNICAL INFORMATION FOR TYPEFACE™

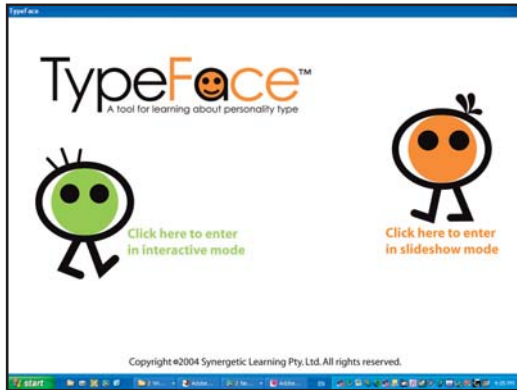
TypeFace™ is designed to run on Windows 98, ME, 2000 & XP and is optimised for 1024 x 768 and 800 x 600 screen settings.

In addition to information in the User's Guide, much of the information you need to run the software for TypeFace™ is contained within the program or in pop-up error messages that appear if you try to do something the program can't do.

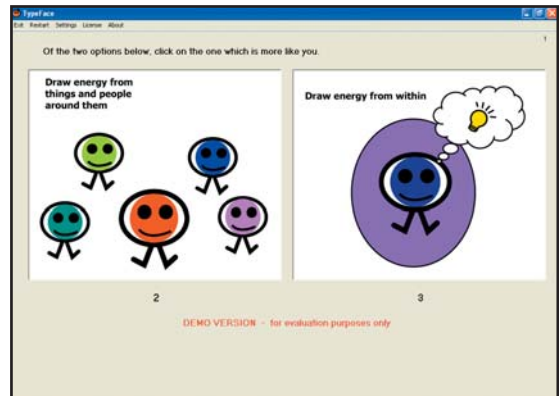
SCREENSHOTS OF TYPEFACE™

The pictures used in TypeFace™ are bright and attractive and appeal to both children and adults. Some screenshots appear below to give you a sense of the “look and feel” of TypeFace™.

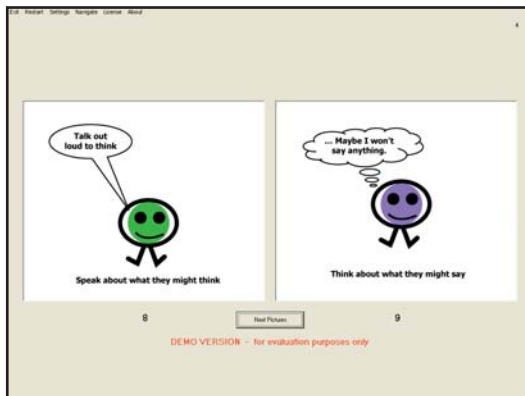
You can enter TypeFace™ in either interactive or slideshow mode by clicking on the appropriate area. Once in the program, you can easily switch between modes.



You can navigate within InterActive TypeFace™ by either clicking on the images or turning on the Buttons setting and clicking on those instead. All the menus are very easy to follow and do not require a great degree of computer literacy.



In slideshow mode, the taskbar at the bottom of the screen (as in the image above) disappears (as in the images at right and below).



Some images within TypeFace™ are intended to provide comparisons between preferences (such as at left) whereas others (such as below) are intended to help you have a discussion with your client/ student/ participant.

The slideshow includes prompt pictures (Examples) for aiding in the verification (Type confirmation) process and preference exercises with instructions included in the User's Guide that accompanies the TypeFace™ kit.



The TypeFace™ cards (set of 80 laminated cards) include eight Temperament examples, the slideshow includes 12 pictures.

For more information or to obtain an order form please visit www.synergetic.com.au or call Synergetic Learning on +61 3 9787 8856.